

# YEAR IN REVIEW

KENORA PUBLIC LIBRARY  
2020



23,450

VISITORS TO THE LIBRARY

75

PROGRAMS  
OFFERED



1,959

PROGRAM  
ATTENDANCE

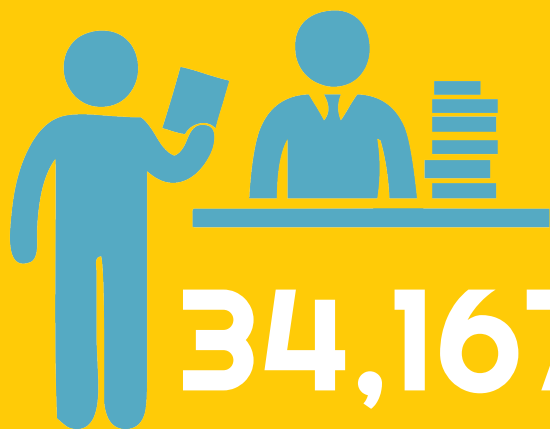


17,100

REFERENCE AND  
READERS ADVISORY  
REQUESTS

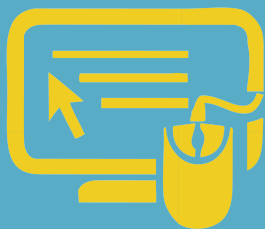
8,500

TECH  
TRAINING  
SESSIONS



34,167

ITEMS WERE CHECKED OUT



9,600

PUBLIC COMPUTER  
SESSIONS



145,112

FACEBOOK  
VISITS



219,135

WEBSITE VISITS



22,355

E-BOOKS/E-AUDIO  
CHECKED OUT

3,243

ACTIVE  
BORROWERS

213

NEW CARDS THIS YEAR



1,012

INTERLIBRARY  
LOAN BORROWED  
AND LENT



52 & 20

OPEN HOURS PER  
WEEK (KEN&KEEW)



3,058

PRINT BOOKS ADDED TO OUR  
COLLECTION

\$64,816

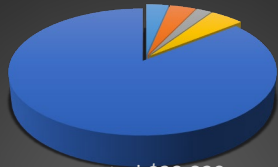
SPENT ON NEW PRINT BOOKS



**Kenora Branch Library**

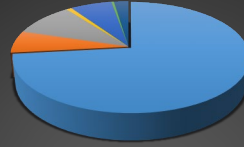
24 Main St. South | Kenora, Ontario P9N 1S7 | 807-467-2081 | [www.kenorapubliclibrary.org/](http://www.kenorapubliclibrary.org/)

## 2020 Revenue



- Library generated \$23,829
- Grants and donations received \$27,946
- Imagination Library Donations \$16,424
- Ministry of Heritage, Sport, Tourism and Culture Industries \$35,583
- City of Kenora \$626,132

## 2020 Expenses



- Wages incl. benefits \$504,628
- Library services & supplies \$44,815
- Facilities and Utilities \$67,807
- Financial \$5,865
- Amortization \$46,698
- Transfer to Community Foundation \$2,650



A special **THANK YOU** to the Kenora and Lake of the Woods Regional Community Foundation and all of the people who support the library with financial donations throughout the year!



### Library Staff

Crystal Alcock, CEO  
Lori Jackson  
Kelly Wald  
Candice Ring  
Lyn MacKay  
Kathleen Todd  
Kristie Roussin

Pages:  
Beth,  
Tyler, Noah

### Library Board

Maureen Wasacase, Chair  
Marj Poirier, Vice-Chair  
Rory McMillan, Council  
Chris Moorley  
Tim Fullmer  
Jennifer Hansen  
Carmen Marginet  
Patricia Schwartz  
Logan Haney

To provide an essential, innovative community service for people of all ages and backgrounds, contributing to our quality of life, affirming our sense of community and our spirit of optimism and discovery.

*Strategic Plan*